

Lessard-Sams Outdoor Heritage Council

Fiscal Year 2017 / ML 2016 Request for Funding



Date: June 15, 2015

Program or Project Title: Anoka Sand Plain Habitat Conservation - Phase IV

Funds Requested: \$3,346,500

Manager's Name: Wayne Ostlie

Title: Director of Conservation Programs

Organization: Great River Greening

Address: 35 W Water Street

Address 2: Suite 201

City: St. Paul, MN 55107

Office Number: 651-665-9500

Email: wostlie@greatrivergreening.org

Website: www.greatrivergreening.org

County Locations: Anoka, Benton, Isanti, Morrison, Sherburne, Sherburne , and Todd.

Regions in which work will take place:

- Forest / Prairie Transition
- Metro / Urban

Activity types:

- Restore
- Enhance
- Protect in Fee

Priority resources addressed by activity:

- Wetlands
- Forest
- Prairie
- Habitat

Abstract:

The Anoka Sandplain Partnership (Phase 4) proposal will restore, enhance and protect 3,500 acres of wildlife habitat on priority public lands principally within the Anoka Sandplain Ecological Region within the Metropolitan Urbanizing and Forest-Prairie Transition sections.

Design and scope of work:

The Anoka Sandplain Partnership includes >23 government agencies/organizations working to protect, enhance and restore the lands and waters of the ecoregion. We put forward an ambitious fourth proposal to accelerate protection and enhancement of important wildlife habitat.

The following outcomes will be realized:

1. Expansion of ongoing restoration/enhancement to 18 new project areas. Sites include: 7 state WMAs, 1 Forest, 3 SNAs; 1 national wildlife refuge; and 4 local/county/regional protected lands; additionally, 2 projects will address enhancement needs associated with the Rum River and wild rice.
2. Restoration/enhancement of 3,500 acres (and 1.5 miles of shoreline) and protection of 10 acres of habitat across priority lands and waters, including what will become one of the largest pollinator restoration projects in North America.
3. Engagement of local communities in the implementation of project activities.

Proposed Project Areas by Partner:

1. Anoka Conservation District

- Boot Lake SNA (Anoka County) – Part of a chain of ice-block lakes, this SNA contains MCBS-quality habitats ranging from oak forest and old white pine stands to wooded bogs/wet meadows. Actions: Enhance 20 acres of tamarack swamp through glossy buckthorn treatment.
- Mikkelson WMA (Anoka County) – The 816-acres WMA recently has expanded to accommodate the Metro hunting community, and contains MCBS quality habitats and rare species. Actions: Enhance 80 acres of alder swamp/oak forest through buckthorn control.
- Kern Conservation Easement (Anoka County) – The 55-acre property lies within a habitat corridor along Ford Brook and is protected by a conservation easement. Actions: Enhance 35 acres of wetland, riparian buffer and prairie through plantings, seeding, and prescribed burns.
- Revetments on the Rum (Anoka County) – The Rum River is one of six state-designated wild and scenic rivers, but is impacted by bank erosion from wave action and natural forces. Actions: Enhance 2000 feet of riparian and instream habitat through installation of cost-effective and ecologically-sensitive cedar revetments and willow staking.

2. Great River Greening

- Sand Dunes State Forest, Phase 2 (Sherburne County) – The SDSF Operational Plan (2013) identifies 630 acres of the 5,700-acre forest for immediate action to address imperiled native plant communities and rare species. Actions: Enhancement of 322 acres of priority habitat through pine removal, prescribed burning, and invasive species control.
- Sherburne NWR, Phase 4 (Sherburne County) – This 30,700-acre refuge protects migratory birds and other wildlife, with a focus on oak savanna, wetlands and Big Woods habitat. This phase will initiate one of the largest pollinator restoration projects in North America. Actions: Enhancement of 1,200 acres of partially restored prairie habitat by interseeding a diverse native seed mixture to bring site to state pollinator restoration guidelines.
- Twin Lakes SNA (Isanti County) – This 50-acre SNA protects a high quality white pine-hardwood forest on the shores of Horseshoe Lake, and is part of a 3,500-acre natural area complex. Actions: Enhancement of 24 acres of white pine-hardwood forest through woody thinning/control and prescribed fire.
- Bridgeview Park Reserve (Sherburne County) – This 31-acre county park lies along the Mississippi River and protects a MCBS-quality example of oak savanna. Actions: Enhancement of 31 acres of oak savanna through woody invasive species control and prescribed fire.
- Rice Area Sportsmens Club WMA (Morrison County) – This 580-acre WMA consists of extensive oak savanna/woodland grading into restored native grass fields and wetlands. Actions: Enhancement of 360 acres of oak woodland/savanna and prairie through prescribed burning.
- Michaelson Farm WMA (Benton County) – This 276-acre WMA on the Mississippi River consists of floodplain forest, lowland grass, brush, and oak woodland. Actions: Enhancement of 75 acres of oak woodland through prescribed fire.
- Uncas Dunes SNA (Sherburne County) – This 745-acre SNA is preserved for its relict dunefield, oak savanna, oak forest, and wetland habitats, and rare species including the Uncas skipper. Actions: Enhancement of 12 acres of oak savanna habitat through invasive species control.
- Carlos Avery WMA (Chisago & Anoka Counties) – This 718-acre WMA is a mosaic of marsh, brushland, prairie and forest that provides great wildlife habitat and hunting opportunities. Actions: Enhancement of 285 acres of woodland and oak savanna through woody invasive species control, prescribed fire, seeding and planting.
- Talahi Woods (Stearns County) – This 23-acre natural area lies along the Mississippi River and is part of a large habitat corridor along the river; the site is owned by St. Cloud State University and protects an oak savanna remnant and is used as an outdoor classroom. Actions: Enhancement of 23 acres of oak savanna through woody invasive species control, prescribed fire, seeding and planting.
- Wild Rice Restoration, Phase 2 (Isanti, Sherburne, Kennebec, Mille Lacs & Anoka Counties) – Nowhere is wild rice as important as in Minnesota, and the Rum River watershed was near the center of its range. Actions: Enhancement of 150 acres of public wetlands/rivers through wild rice seeding and associated habitat management activities.

3. Isanti County Parks

- Becklin Homestead Wildlife Management Area and County Park (Isanti County) – This jointly-managed 284-acre park/WMA located along the Rum River consists of prairies, woodlands, savannas is dedicated for hunting use for the physically challenged. Actions: Protection through fee title acquisition and restoration of 9.58 acres of land (with residence) adjacent to existing park boundaries to protect resource enable effective management.

4. National Wild Turkey Federation

- Buckhorn Lake WMA (Todd County) – This 157-acre WMA consists of rolling hills of oak woodland and grasslands along Buckhorn Lake. Actions: Enhancement of 82 acres of oak woodland through woody invasive species control and fire break installation in preparation for prescribed fire.
- Grey Eagle WMA (Todd County) – This 1400-acre WMA contains large rolling, forested hills, grasslands and wetlands. Actions: Enhancement of 665 acres of forest through woody invasive species control and fire break installation in preparation for prescribed fire.
- Sponsa WMA (Morrison County) – This 222-acre WMA contains rolling grasslands and oak-popple woodlands on Coon Lake. Actions: Enhancement of 110 acres of forest through woody invasive species control and fire break installation in preparation for prescribed fire.

Crops:

Will there be planting of corn or any crop on OHF land purchased or restored in this program - **No**

How does the request address MN habitats that have: historical value to fish and wildlife, wildlife species of greatest conservation need, MN County Biological Survey data, and/or rare, threatened and endangered species inventories:

We review all of these data sets during the course of our proposal development, and many of our proposed sites are ranked highly for having examples of high quality MCBS-ranked natural communities and concentrations of rare species. The Anoka Sandplain is known to provide home to some 115 state-listed plants and animals, the most diverse ecological subsection (in terms of rare species) in the state. We are compelled to ensure their long-term viability is ensured, and this proposal provides a major step in that direction.

What is the nature of urgency and why it is necessary to spend public money for this work as soon as possible:

Oak savanna is imperiled with <1% remaining; 115 state listed species occur in the ASP requiring attention. Minnesota's CWCP identifies management and protection of oak savannas as the highest priority for the ecoregion. The ASP is realizing immense development pressure. Government agencies often lack the resources to manage important lands.

Describe the science based planning and evaluation model used:

We use a slate of information to target our actions, including the DNR's MCBS Sites of Biodiversity Significance, Regionally Ecological Significant Areas, and Habitat Corridors. We consider the Anoka Sandplain breakout of the Minnesota Comprehensive Wildlife Conservation Plan our Partnership's implementation plan.

Which sections of the Minnesota Statewide Conservation and Preservation Plan are applicable to this project:

- H1 Protect priority land habitats
- H5 Restore land, wetlands and wetland-associated watersheds

Which other plans are addressed in this proposal:

- Minnesota DNR Strategic Conservation Agenda
- Outdoor Heritage Fund: A 25 Year Framework

Which LSOHC section priorities are addressed in this proposal:

Forest / Prairie Transition:

- Protect, enhance, and restore wild rice wetlands, shallow lakes, wetland/grassland complexes, aspen parklands, and shoreland that provide critical habitat for game and nongame wildlife

Metro / Urban:

- Protect, enhance, and restore remnant native prairie, Big Woods forests, and oak savanna with an emphasis on areas with high biological diversity

Relationship to other funds:

- Environmental and Natural Resource Trust Fund
- Parks and Trails Fund

Although the ASP Partnership is using and pursuing funds available through other constitutional funds (Environmental and Natural Resources Trust Fund and Clean Water Fund, specifically) to achieve its goals in the Anoka Sandplain, none of those funds are being tapped to simultaneously address the habitat restoration and enhancement needs proposed here. This proposal to LSOHC for Outdoor Heritage Fund support does not supplant any other sources of funds. In all cases, this proposal and the projects to be completed accelerate habitat work in the Anoka Sandplain.

How does this proposal accelerate or supplement your current efforts in this area:

The proposed projects build upon an extensive public investment in public lands and greatly accelerate protection, enhancement and restoration of priority habitat in the Metropolitan Urbanizing and Forest-Prairie Transition sections. The proposed work would not proceed nearly to the extent made possible with these funds and certainly not within the same timeline. The OHF grant funds will not supplant any current funding sources.

Describe the source and amount of non-OHF money spent for this work in the past:

Appropriation Year	Source	Amount
2010	ENRTF	127,344
2013	ENRTF	256,000
2013	Other State/Federal/Local Government	2,138,000
2013	Non-Government	595,000
2014	ENRTF	129,000
2014	Other State/Federal/Local Government	3,013,000
2014	Non-Government	717,000
2010	Other State/Federal/Local Government	2,085,936
2010	Non-Government	519,000
2011	ENRTF	70,357
2011	Other State/Federal/Local Government	3,261,179
2011	Non-Government	540,000
2012	ENRTF	164,000
2012	Other State/Federal/Local Government	1,861,364
2012	Non-Government	535,000

How will you sustain and/or maintain this work after the Outdoor Heritage Funds are expended:

Site-specific resource management plans will be utilized (and developed, if not already in place) to guide effective long-term management of targeted habitats/species. All land managers associated with sites included in this proposal have committed to the long-term maintenance of these habitat improvements in line with prescribed actions. A principle goal of this proposal is accelerate enhancement/restoration of respective sites and bring them to a point where on-going management costs are diminished and the resource can be effectively maintained over time.

The ASP Partnership is committed to working with respective land management agencies (local, state and federal) and conservation organizations in an on-going basis to identify and procure financial resources for maintaining these improvements as needed, bring volunteers to bear, and otherwise assist in reducing the financial and capacity burden in the face of fiscal constraints.

Explain the things you will do in the future to maintain project outcomes:

Year	Source of Funds	Step 1	Step 2	Step 3
ACD - 2019-2021	Anoka SWCD	Inspect	Spot Treat	
ACD - 2019-2021	Anoka SWCD	Inspect	Bough Packing	Willow Staking
NWTF - 2020	MN DNR	Prescribed Fire	Assessment	Spot Treatment
NWTF - 2021	MN DNR	Assessment	Spot Treatment	
NWTF - 2022	MN DNR	Assessment	Spot Treatment	
ICP - 2019-2021	Isanti County Parks	Assessment	Mowing/Spot Treatment	Prescribed Fire
G RG - 2019-2021	MN DNR, Sherburne County, FWS	Assessment	Spot Treatment	Prescribed Fire

Activity Details:

If funded, this proposal will meet all applicable criteria set forth in MS 97A.056 - **Yes**

Will local government approval be sought prior to acquisition - **Yes**

Is the land you plan to acquire free of any other permanent protection - **No**

The parcel contains a residence. Acquisition is sought to round out the County Park/WMA management boundary and facilitate active management of the property and enhancement to existing protected lands and wildlife populations.

Is this land currently open for hunting and fishing - **Yes**

The County Park/WMA is jointly managed by Isanti County and MN DNR and is dedicated to hunting specifically for disabled hunters only.

Will the land be open for hunting and fishing after completion - **Yes**

See comments above related to hunting by disabled hunters only.

Will restoration and enhancement work follow best management practices including MS 84.973 Pollinator Habitat Program - **Yes**

Is the activity on permanently protected land per 97A.056, subd 13(f), tribal lands, and/or public waters per MS 103G.005, Subd. 15 - **Yes (WMA, SNA, Private Land, County/Municipal, Refuge Lands, Public Waters, State Forests)**

Accomplishment Timeline:

Activity	Approximate Date Completed
GRC - Restoration plans completed across all proposed sites.	2017
GRC - All proposed restorations/enhancements completed.	2019
NWTF - Restoration/enhancements completed across 857 acres	2019
Isanti County - Land Purchase Completed and Restoration Initiated.	2018
Isanti County - Restoration completed.	2019
Anoka - Basal bark herbicide application to buckthorn initiated.	2016
Anoka - Herbicide application to buckthorn completed	2019
Anoka - Riverbank revetment work completed.	2019

Federal Funding:

Do you anticipate federal funds as a match for this program - **Yes**

Are the funds confirmed - **No**

What is the approximate date you anticipate receiving confirmation of the federal funds - **November/December 2015**

Outcomes:

Programs in forest-prairie transition region:

- Wetland and upland complexes will consist of native prairies, restored prairies, quality grasslands, and restored shallow lakes and wetlands *Using and updating existing plans, partners collaborate to target priority lands for protection, restoration and enhancement activities. This work builds upon prior phases and expands the impact of our work. Ongoing assessment by partners will document change in habitat condition and expansion of priority habitat, and associated species.*

Programs in metropolitan urbanizing region:

- Core areas protected with highly biologically diverse wetlands and plant communities, including native prairie, Big Woods, and oak savanna *Using and updating existing plans, partners collaborate to target priority lands for protection, restoration and enhancement activities. This work builds upon prior phases and expands the impact of our work. Ongoing assessment by partners will document change in habitat condition and expansion of priority habitat, and associated species.*

Budget Spreadsheet

Total Amount of Request: \$3,346,500

Budget and Cash Leverage

Budget Name	LSOHC Request	Anticipated Leverage	Leverage Source	Total
Personnel	\$345,300	\$152,900	Anoka SWCD, Anoka SWCD, Anoka SWCD, Anoka SWCD, NFWF, Greening, Sherburne County, Greening, Greening, NFWF, NFWF	\$498,200
Contracts	\$2,751,800	\$32,000	Anoka SWCD, Landowner, NFWF	\$2,783,800
Fee Acquisition w/ PILT	\$0	\$0		\$0
Fee Acquisition w/o PILT	\$120,000	\$21,000	Isanti County Parks	\$141,000
Easement Acquisition	\$0	\$0		\$0
Easement Stewardship	\$0	\$0		\$0
Travel	\$21,900	\$2,000	NFWF	\$23,900
Professional Services	\$0	\$0		\$0
Direct Support Services	\$38,800	\$23,800	Greening	\$62,600
DNR Land Acquisition Costs	\$0	\$0		\$0
Capital Equipment	\$0	\$0		\$0
Other Equipment/Tools	\$14,200	\$3,100	Anoka SWCD, NFWF	\$17,300
Supplies/Materials	\$54,500	\$57,500	Anoka SWCD, Landowner, NFWF	\$112,000
DNR IDP	\$0	\$0		\$0
Total	\$3,346,500	\$292,300		-\$3,638,800

Personnel

Position	FTE	Over # of years	LSOHC Request	Anticipated Leverage	Leverage Source	Total
Regional Biologist	0.06	3.00	\$15,000	\$0		\$15,000
Grant Coordinator	0.03	3.00	\$5,000	\$0		\$5,000
Technician	0.21	3.00	\$32,200	\$3,200	Anoka SWCD	\$35,400
Office Administrator	0.02	3.00	\$6,100	\$600	Anoka SWCD	\$6,700
District Manager	0.03	3.00	\$12,700	\$1,300	Anoka SWCD	\$14,000
Conservation Specialist	0.05	3.00	\$12,700	\$1,300	Anoka SWCD	\$14,000
Project Manager	0.49	3.00	\$90,400	\$106,000	NFWF, Greening, Sherburne County	\$196,400
Crew	0.69	3.00	\$68,000	\$24,000	Greening	\$92,000
Volunteer Manager	0.04	3.00	\$5,800	\$11,500	Greening, NFWF	\$17,300
Director of Conservation Programs	0.12	3.00	\$29,400	\$5,000	NFWF	\$34,400
Grant Management Assistant	0.30	3.00	\$36,800	\$0		\$36,800
Director of Finance	0.00	3.00	\$20,900	\$0		\$20,900
Finance Ops Manager	0.00	3.00	\$10,300	\$0		\$10,300
Total	2.04	39.00	\$345,300	\$152,900		-\$498,200

Budget and Cash Leverage by Partnership

Budget Name	Partnership	LSOHC Request	Anticipated Leverage	Leverage Source	Total
Personnel	National Wild Turkey Federation	\$20,000	\$0		\$20,000
Contracts	National Wild Turkey Federation	\$778,200	\$0		\$778,200
Fee Acquisition w/ PILT	National Wild Turkey Federation	\$0	\$0		\$0
Fee Acquisition w/o PILT	National Wild Turkey Federation	\$0	\$0		\$0
Easement Acquisition	National Wild Turkey Federation	\$0	\$0		\$0
Easement Stewardship	National Wild Turkey Federation	\$0	\$0		\$0
Travel	National Wild Turkey Federation	\$8,000	\$0		\$8,000
Professional Services	National Wild Turkey Federation	\$0	\$0		\$0
Direct Support Services	National Wild Turkey Federation	\$15,000	\$0		\$15,000
DNR Land Acquisition Costs	National Wild Turkey Federation	\$0	\$0		\$0

Capital Equipment	National Wild Turkey Federation	\$0	\$0	\$0
Other Equipment/Tools	National Wild Turkey Federation	\$0	\$0	\$0
Supplies/Materials	National Wild Turkey Federation	\$0	\$0	\$0
DNR IDP	National Wild Turkey Federation	\$0	\$0	\$0
Total	-	\$821,200	\$0	\$821,200

Personnel - National Wild Turkey Federation

Position	FTE	Over # of years	LSOHC Request	Anticipated Leverage	Leverage Source	Total
Regional Biologist	0.06	3.00	\$15,000	\$0		\$15,000
Grant Coordinator	0.03	3.00	\$5,000	\$0		\$5,000
Total	0.09	6.00	\$20,000	\$0		\$20,000

BudgetName	Partnership	LSOHC Request	Anticipated Leverage	Leverage Source	Total
Personnel	Great River Greening	\$261,600	\$146,500	NFWF, Greening, Sherburne County, Greening, Greening, NFWF, NFWF	\$408,100
Contracts	Great River Greening	\$1,899,100	\$20,000	NFWF	\$1,919,100
Fee Acquisition w/ PILT	Great River Greening	\$0	\$0		\$0
Fee Acquisition w/o PILT	Great River Greening	\$0	\$0		\$0
Easement Acquisition	Great River Greening	\$0	\$0		\$0
Easement Stewardship	Great River Greening	\$0	\$0		\$0
Travel	Great River Greening	\$13,900	\$2,000	NFWF	\$15,900
Professional Services	Great River Greening	\$0	\$0		\$0
Direct Support Services	Great River Greening	\$23,800	\$23,800	Greening	\$47,600
DNR Land Acquisition Costs	Great River Greening	\$0	\$0		\$0
Capital Equipment	Great River Greening	\$0	\$0		\$0
Other Equipment/Tools	Great River Greening	\$13,400	\$3,000	NFWF	\$16,400
Supplies/Materials	Great River Greening	\$0	\$50,000	NFWF	\$50,000
DNR IDP	Great River Greening	\$0	\$0		\$0
Total	-	\$2,211,800	\$245,300		\$2,457,100

Personnel - Great River Greening

Position	FTE	Over # of years	LSOHC Request	Anticipated Leverage	Leverage Source	Total
Project Manager	0.49	3.00	\$90,400	\$106,000	NFWF, Greening, Sherburne County	\$196,400
Crew	0.69	3.00	\$68,000	\$24,000	Greening	\$92,000
Volunteer Manager	0.04	3.00	\$5,800	\$11,500	Greening, NFWF	\$17,300
Director of Conservation Programs	0.12	3.00	\$29,400	\$5,000	NFWF	\$34,400
Grant Management Assistant	0.30	3.00	\$36,800	\$0		\$36,800
Director of Finance	0.00	3.00	\$20,900	\$0		\$20,900
Finance Ops Manager	0.00	3.00	\$10,300	\$0		\$10,300
Total	1.64	21.00	\$261,600	\$146,500		\$408,100

BudgetName	Partnership	LSOHC Request	Anticipated Leverage	Leverage Source	Total
Personnel	Anoka Conservation District	\$63,700	\$6,400	Anoka SWCD, Anoka SWCD, Anoka SWCD, Anoka SWCD	\$70,100
Contracts	Anoka Conservation District	\$74,500	\$12,000	Anoka SWCD, Landowner	\$86,500
Fee Acquisition w/ PILT	Anoka Conservation District	\$0	\$0		\$0
Fee Acquisition w/o PILT	Anoka Conservation District	\$0	\$0		\$0
Easement Acquisition	Anoka Conservation District	\$0	\$0		\$0
Easement Stewardship	Anoka Conservation District	\$0	\$0		\$0

Travel	Anoka Conservation District	\$0	\$0		\$0
Professional Services	Anoka Conservation District	\$0	\$0		\$0
Direct Support Services	Anoka Conservation District	\$0	\$0		\$0
DNR Land Acquisition Costs	Anoka Conservation District	\$0	\$0		\$0
Capital Equipment	Anoka Conservation District	\$0	\$0		\$0
Other Equipment/Tools	Anoka Conservation District	\$800	\$100	Anoka SWCD	\$900
Supplies/Materials	Anoka Conservation District	\$54,500	\$7,500	Anoka SWCD, Landowner	\$62,000
DNR IDP	Anoka Conservation District	\$0	\$0		\$0
Total		\$193,500	\$26,000		\$219,500

Personnel - Anoka Conservation District

Position	FTE	Over # of years	LSOHC Request	Anticipated Leverage	Leverage Source	Total
Technician	0.21	3.00	\$32,200	\$3,200	Anoka SWCD	\$35,400
Office Administrator	0.02	3.00	\$6,100	\$600	Anoka SWCD	\$6,700
District Manager	0.03	3.00	\$12,700	\$1,300	Anoka SWCD	\$14,000
Conservation Specialist	0.05	3.00	\$12,700	\$1,300	Anoka SWCD	\$14,000
Total	0.31	12.00	\$63,700	\$6,400		\$70,100

Budget Name	Partnership	LSOHC Request	Anticipated Leverage	Leverage Source	Total
Personnel	Isanti County Parks	\$0	\$0		\$0
Contracts	Isanti County Parks	\$0	\$0		\$0
Fee Acquisition w/ PILT	Isanti County Parks	\$0	\$0		\$0
Fee Acquisition w/o PILT	Isanti County Parks	\$120,000	\$21,000	Isanti County Parks	\$141,000
Easement Acquisition	Isanti County Parks	\$0	\$0		\$0
Easement Stewardship	Isanti County Parks	\$0	\$0		\$0
Travel	Isanti County Parks	\$0	\$0		\$0
Professional Services	Isanti County Parks	\$0	\$0		\$0
Direct Support Services	Isanti County Parks	\$0	\$0		\$0
DNR Land Acquisition Costs	Isanti County Parks	\$0	\$0		\$0
Capital Equipment	Isanti County Parks	\$0	\$0		\$0
Other Equipment/Tools	Isanti County Parks	\$0	\$0		\$0
Supplies/Materials	Isanti County Parks	\$0	\$0		\$0
DNR IDP	Isanti County Parks	\$0	\$0		\$0
Total		\$120,000	\$21,000		\$141,000

Amount of Request: \$3,346,500
Amount of Leverage: \$292,300
Leverage as a percent of the Request: 8.73%

Output Tables

Table 1a. Acres by Resource Type

Type	Wetlands	Prairies	Forest	Habitats	Total
Restore	0	0	0	0	0
Protect in Fee with State PILT Liability	0	0	0	0	0
Protect in Fee W/O State PILT Liability	0	0	10	0	10
Protect in Easement	0	0	0	0	0
Enhance	215	1,958	1,314	3	3,490
Total	215	1,958	1,324	3	3,500

Table 1b. How many of these Prairie acres are Native Prairie?

Type	Native Prairie
Restore	0
Protect in Fee with State PILT Liability	0
Protect in Fee W/O State PILT Liability	0
Protect in Easement	0
Enhance	433
Total	433

Table 2. Total Requested Funding by Resource Type

Type	Wetlands	Prairies	Forest	Habitats	Total
Restore	\$0	\$0	\$0	\$0	\$0
Protect in Fee with State PILT Liability	\$0	\$0	\$0	\$0	\$0
Protect in Fee W/O State PILT Liability	\$0	\$0	\$120,000	\$0	\$120,000
Protect in Easement	\$0	\$0	\$0	\$0	\$0
Enhance	\$235,700	\$1,841,100	\$1,052,700	\$97,000	\$3,226,500
Total	\$235,700	\$1,841,100	\$1,172,700	\$97,000	\$3,346,500

Table 3. Acres within each Ecological Section

Type	Metro/Urban	Forest/Prairie	SE Forest	Prairie	Northern Forest	Total
Restore	0	0	0	0	0	0
Protect in Fee with State PILT Liability	0	0	0	0	0	0
Protect in Fee W/O State PILT Liability	10	0	0	0	0	10
Protect in Easement	0	0	0	0	0	0
Enhance	2,174	1,316	0	0	0	3,490
Total	2,184	1,316	0	0	0	3,500

Table 4. Total Requested Funding within each Ecological Section

Type	Metro/Urban	Forest/Prairie	SE Forest	Prairie	Northern Forest	Total
Restore	\$0	\$0	\$0	\$0	\$0	\$0
Protect in Fee with State PILT Liability	\$0	\$0	\$0	\$0	\$0	\$0
Protect in Fee W/O State PILT Liability	\$120,000	\$0	\$0	\$0	\$0	\$120,000
Protect in Easement	\$0	\$0	\$0	\$0	\$0	\$0
Enhance	\$2,219,500	\$1,007,000	\$0	\$0	\$0	\$3,226,500
Total	\$2,339,500	\$1,007,000	\$0	\$0	\$0	\$3,346,500

Table 5. Average Cost per Acre by Resource Type

Type	Wetlands	Prairies	Forest	Habitats
Restore	\$0	\$0	\$0	\$0
Protect in Fee with State PILT Liability	\$0	\$0	\$0	\$0
Protect in Fee W/O State PILT Liability	\$0	\$0	\$12,000	\$0
Protect in Easement	\$0	\$0	\$0	\$0
Enhance	\$1,096	\$940	\$801	\$32,333

Table 6. Average Cost per Acre by Ecological Section

Type	Metro/Urban	Forest/Prairie	SE Forest	Prairie	Northern Forest
Restore	\$0	\$0	\$0	\$0	\$0
Protect in Fee with State PILT Liability	\$0	\$0	\$0	\$0	\$0
Protect in Fee W/O State PILT Liability	\$12,000	\$0	\$0	\$0	\$0
Protect in Easement	\$0	\$0	\$0	\$0	\$0
Enhance	\$1,021	\$765	\$0	\$0	\$0

Target Lake/Stream/River Feet or Miles

2

Parcel List

Section 1 - Restore / Enhance Parcel List

Anoka

Name	TRDS	Acres	Est Cost	Existing Protection?
Anoka SWCD - Boot Lake SNA	03322220	35	\$35,000	Yes
Anoka SWCD - Kern Ecological Restoration	03325213	33	\$20,300	Yes
Anoka SWCD - Mikkelson WMA	03322205	80	\$41,200	Yes
Anoka SWCD - Rum River Revetments	03224206	3	\$97,000	Yes
GRG - Carlos Avery WMA - Phase 3	03421213	285	\$555,000	Yes

Benton

Name	TRDS	Acres	Est Cost	Existing Protection?
GRG - Michaelson Farm WMA - Phase 2	03322206	75	\$26,200	Yes

Isanti

Name	TRDS	Acres	Est Cost	Existing Protection?
GRG - Twin Lakes SNA - Phase 2	03422211	24	\$111,100	Yes
GRG - Wild Rice Restoration - Phase 2	03623232	150	\$167,500	Yes

Morrison

Name	TRDS	Acres	Est Cost	Existing Protection?
GRG - RASC WMA - Phase 2	03931213	360	\$48,500	Yes
NWTF - Sponsa WMA	12831231	110	\$100,300	Yes

Sherburne

Name	TRDS	Acres	Est Cost	Existing Protection?
GRG - Bridgeview Park Reserve	03328235	31	\$80,400	Yes
GRG - Sand Dunes State Forest - Phase 2	03427235	322	\$477,100	Yes
GRG - Sherburne NWR - Phase 3	03528216	1,200	\$622,600	Yes
GRG - Uncas Dunes SNA	03427228	12	\$37,200	Yes

Sherburne

Name	TRDS	Acres	Est Cost	Existing Protection?
GRG - Talahi Woods	03523212	23	\$84,838	Yes

Todd

Name	TRDS	Acres	Est Cost	Existing Protection?
NWTF - Buckhorn Lake WMA	12732207	82	\$177,000	Yes
NWTF - Grey Eagle WMA	12732210	665	\$543,900	Yes

Section 2 - Protect Parcel List

No parcels with an activity type protect.

Section 2a - Protect Parcel with Bldgs

No parcels with an activity type protect and has buildings.

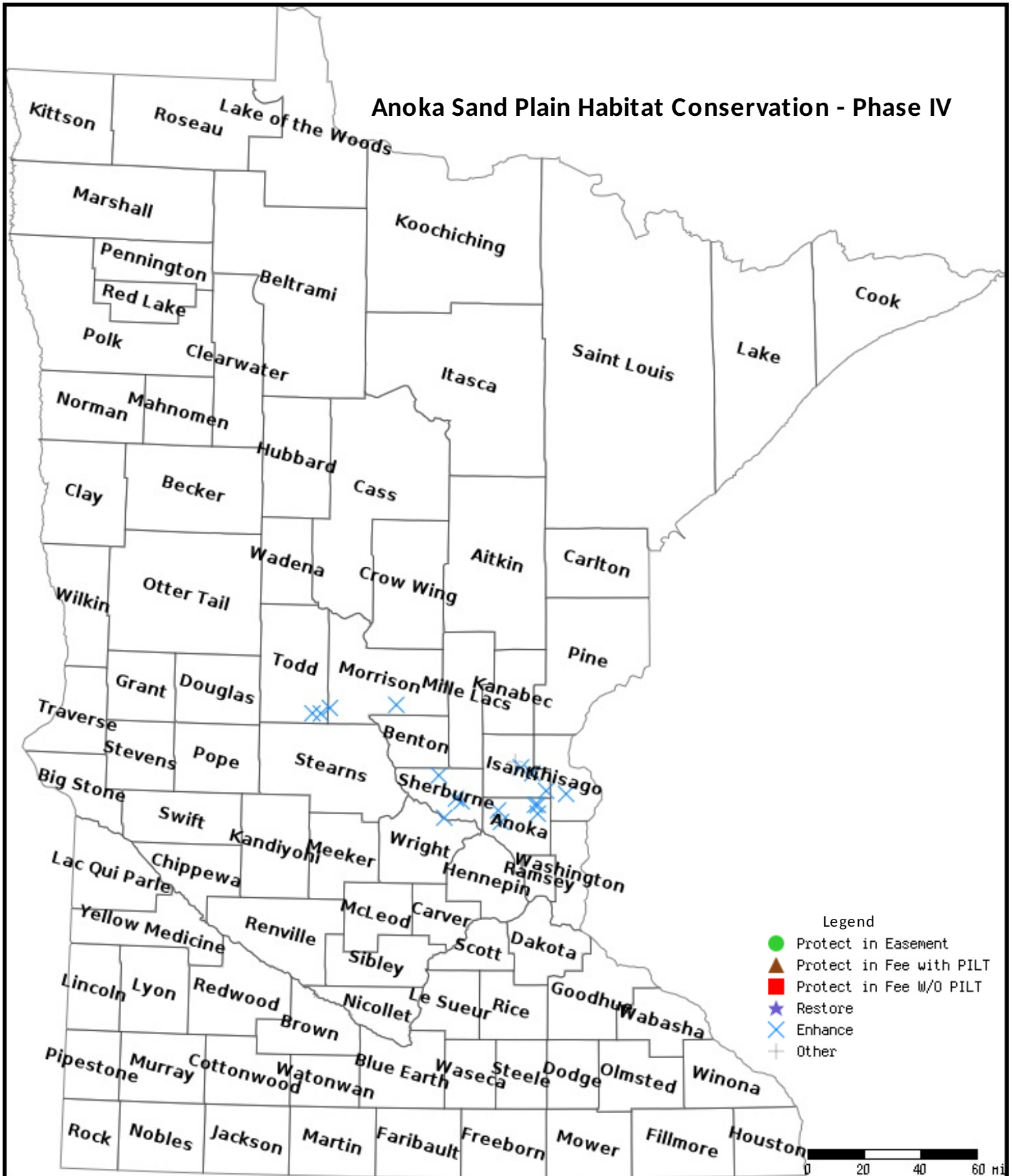
Section 3 - Other Parcel Activity

Isanti

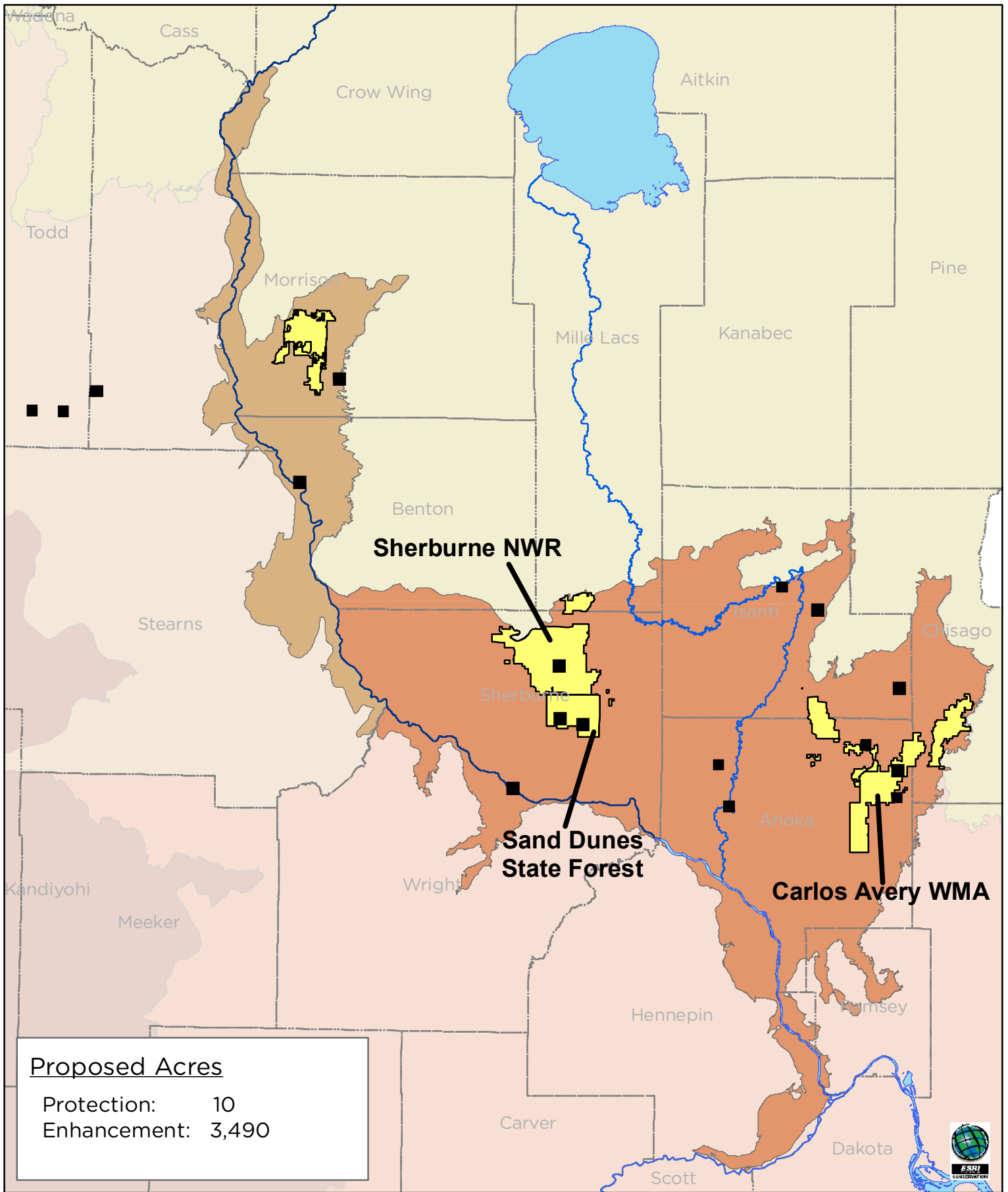
Name	TRDS	Acres	Est Cost	Existing Protection?	Hunting?	Fishing?
Isanti CP - Lood Property	03624224	10	\$120,000	No	Limited	NA

Parcel Map

Anoka Sand Plain Habitat Conservation - Phase IV



Data Generated From Parcel List



Anoka Sandplain Partnership Phase IV

0 3 6 12 18 24 Miles



Proposed Projects 2016